

 H.RISHABRAJ
CHAMBERS
BORIVALI [E]

The New Turf of Business

“ I never dreamed about success.
I worked for it.”

– Estée Lauder



H. RISHABRAJ

ENERGIZING HAPPINESS!



Stock Image



Stock Image



Stock Image



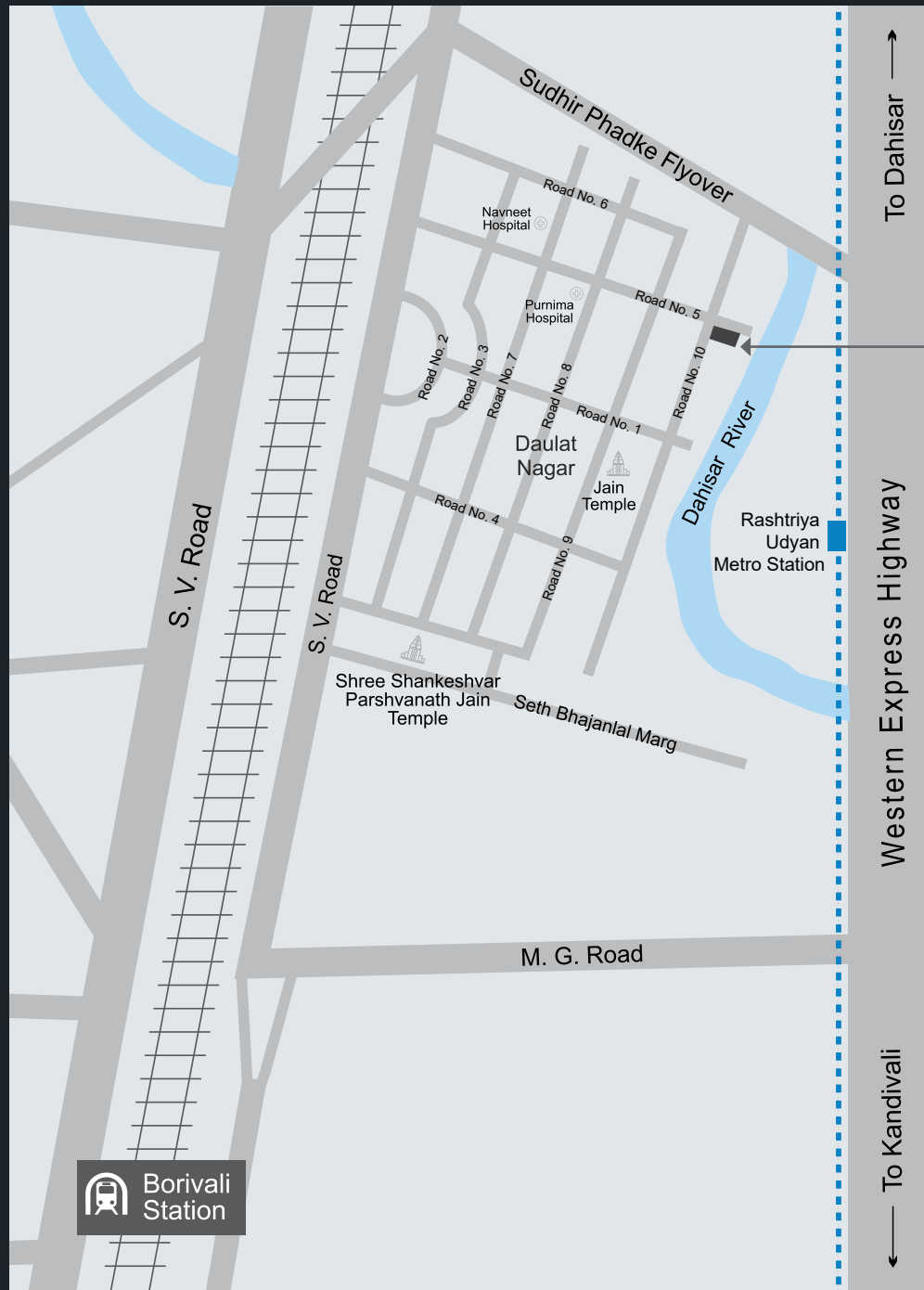
Stock Image

Defining a new 'normal'...

Invite yourself to discover all that life can be and undoubtedly is with Rishabraj Chambers, who are set to offer you the gift of time with their unique 'walk to work' phenomena. Bringing you closer to new age office spaces, you come to rediscover an abundance of time for elusive luxuries otherwise lost in the fast pace of the city. Come and reclaim your time with your loved ones, find your way to a much-cherished hobby or indulge your health with a run or two, so that your high energy translates into optimum productivity at work.

*Spaces that are not just noticed,
but remembered....*





H.RISHABRAJ
CHAMBERS
 BORIVALI [E]

MAP KEY

1.2 kms from Borivali Railway Station

1.5 kms from Dahisar Railway Station

1.4 kms from Western Express Highway

1.8 kms from Rashtriya Udyan Metro Station

An address that means business

A magnificent meeting of innovation and opulence, Rishabraj chambers rises tall and glamorous in the heart of Borivali, at Daulat Nagar. Close to Premji Nagar and Ratan Nagar, it is a spectacular mix of bespoke commercial spaces, curated to accelerate your business towards success and prosperity.

Keeping the location quotient as key, it is an iconic amalgamation of a novel idea and one of its kind business spaces that emanate premiumness in every aspect. Well connected to all prominent points in the city, the project is envisaged to be an ideal business destination that brings together all the right elements required to fuel your passion and zeal for a thriving career and a much-cherished work life balance.



Artist's Impression

“ The pathway from passion to perfection is etched one great idea at a time ”



Artist's Impression

The new plush destination of excellence

Standing out with its unique façade, Rishabraj Chambers brings together aesthetic architecture, contemporary innovation and exemplary design. Offering its occupants, a thriving ground for growing aspirations, Rishabraj Chambers is effectively designed to offer an opulent amalgam of office spaces to suit every business need, from boutique spaces for growing companies to full floor expansive corporate areas. A remarkable development that is envisaged to cater to the ever-growing needs of a world class work ecosystem, the edifice aims to provide the finest quality of work-life to everyone under its tutelage. It is a perfect destination for businesses large and small, to come together and create an environment that promotes productivity, wellness and success.



Artist's Impression



Artist's Impression



Artist's Impression

Perfection in every detail

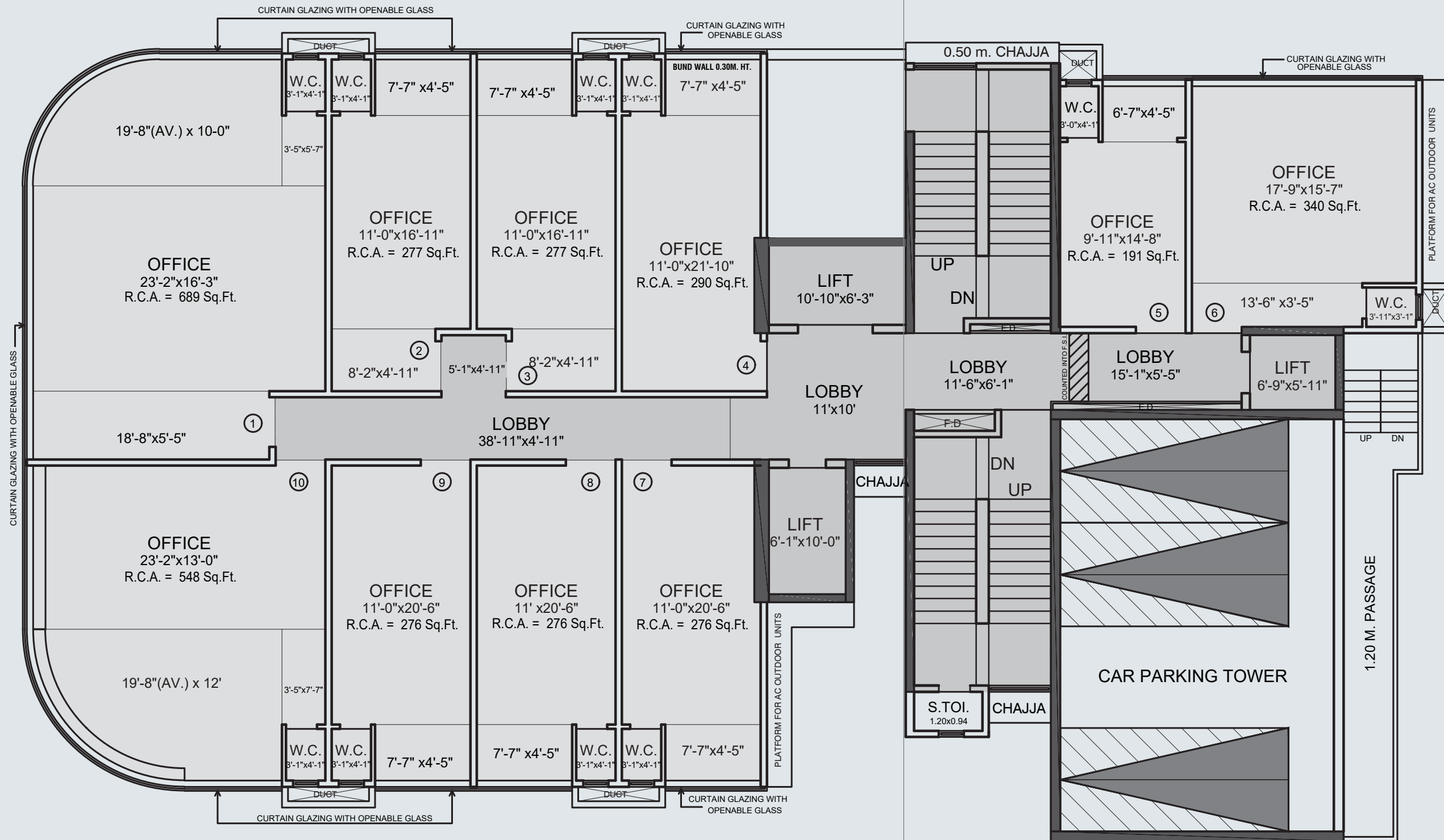
For those who think outside the box...




Stock Image



The cornerstone to success...



- RERA CARPET AREAS**
- OFFICE 1 - 689 Sq.Ft.
 - OFFICE 2 - 277 Sq.Ft.
 - OFFICE 3 - 277 Sq.Ft.
 - OFFICE 4 - 290 Sq.Ft.
 - OFFICE 5 - 191 Sq.Ft.
 - OFFICE 6 - 340 Sq.Ft.
 - OFFICE 7 - 276 Sq.Ft.
 - OFFICE 8 - 276 Sq.Ft.
 - OFFICE 9 - 276 Sq.Ft.
 - OFFICE 10 - 548 Sq.Ft.

TYPICAL FLOOR PLAN 



A whole new age of commercial inspiration...

GRAND ENTRANCE LOBBY

A well-designed double height lobby that ensures a grand entrance with high speed elevators to manage a steady workspace flow.

RETAIL SPACES

Retail space, spread across 3500 sq. ft.

OFFICE SPACES

Office floors spanning 4000 sq. ft, beautifully planned with minimum columns to ensure maximum utilisation of space while the exclusive design allows for natural light and ample air flow.

PARKING

An impressive car parking tower space with latest technology for optimization of space and reduced waiting time.

Other Projects



RISHABRAJ PHOENIX - Borivali W
MahaRera No. P51800033878

Other Projects



BLUE LOTUS - Khar W
MahaRera No. P51800033826



RISHABRAJ SAMAJ DARSHAN - Kandivali W
MahaRera No. P51800010479



RISHABRAJ PARKVISTAS - Borivali W
MahaRera No. P51800033442



63 GOLD MEDAL AVENUE - Goregaon W
MahaRera No. P51800027330



H. RISHABRAJ

ENERGIZING HAPPINESS!

Trust, quality, customer satisfaction, and goodwill are values that are today synonymous with the Rishabraj brand. With Mr. Harrishkumar Jain at the helm of the company, the group has succeeded in translating millions of wishes into reality. The earnest dedication and rising momentum of the company has resulted in the group setting new yardsticks in the redevelopment niche. With glowing testimonials from 1000 + ecstatic families spread over 1 million sq.ft of premium living space happily under its belt, the Group continues to carry forward its never ending passion for excellence with 1.5+ million sq. ft under various stages of planning & construction.

www.hrishabraj.com



LET'S RESTART

COMMITMENTS UNCOMPROMISED

AN INITIATIVE BY H.RISHABRAJ GROUP

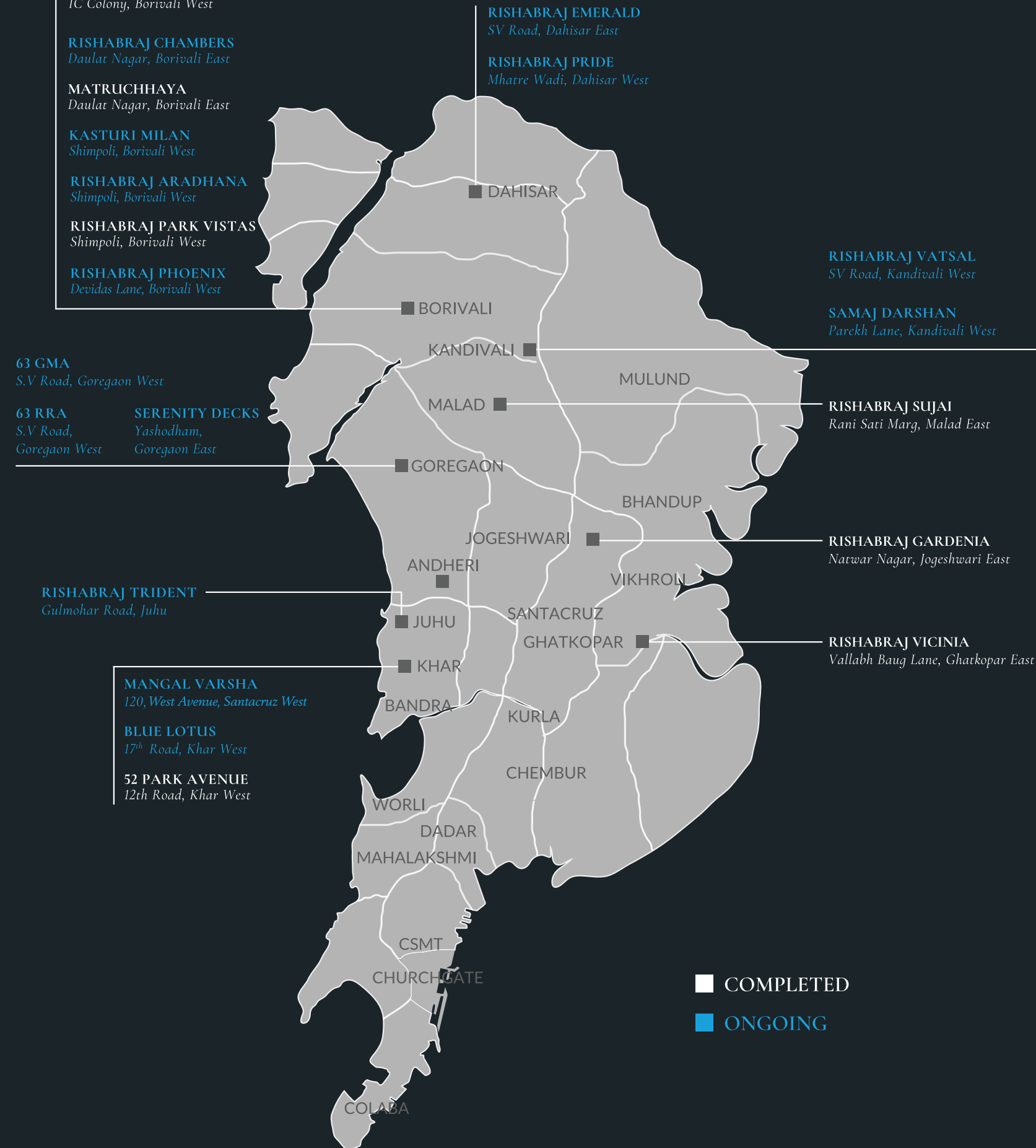
In the city of Mumbai most projects are in dire need of revamping or construction work on booked projects is stalled. This shatters the precious dream of millions who wish to live the ultimate life in this city of dreams.

Is there no respite in sight for such scenarios? Is there a possibility of a saviour emerging from the very belly of this magnificent city to help fix this huge problem? Well, the answer is a resounding Yes!

The innovative genius of H Rishabraj gave birth to a revolutionary brand in the year 2020. We are Let's Restart and Welcome to the ultimate solution provider for delayed construction projects.

www.letrestart.com

- RISHABRAJ RAMESHWAR
Shimpoli, Borivali West
- RISHABRAJ MANGALESH
Shimpoli, Borivali West
- SAFFRON PEACE
IC Colony, Borivali West
- RISHABRAJ VILLA STELLA
IC Colony, Borivali West
- RISHABRAJ PERCY
IC Colony, Borivali West
- RISHABRAJ SURAJ
Shimpoli, Borivali West
- RISHABRAJ AGNEL
IC Colony, Borivali West
- RISHABRAJ CHAMBERS
Daulat Nagar, Borivali East
- MATRUCHHAYA
Daulat Nagar, Borivali East
- KASTURI MILAN
Shimpoli, Borivali West
- RISHABRAJ ARADHANA
Shimpoli, Borivali West
- RISHABRAJ PARK VISTAS
Shimpoli, Borivali West
- RISHABRAJ PHOENIX
Devidas Lane, Borivali West





H. RISHABRAJ

ENERGIZING HAPPINESS!

Developers : RISHABRAJ ESTATE DEVELOPERS PVT. LTD.

Corporate Address : 103, Jai Tirth, Daulat Nagar, Road No. 10,
Borivali (East), Mumbai - 400066 Ph : 022 2893 4545 | 2893 4747
Sales : 8989 72 4545 | 8989 73 4545
E : sales@hrishabraj.com W : www.hrishabraj.com

Site Address : Rishabraj Chambers, Road No. 10, Daulat Nagar, Borivali East, Mumbai 400066

A Proud Member of



MahaRera number : P51800045471 (<https://maharera.mahaonline.gov.in>)

Disclaimer : The plans, specifications, amenities, facilities, images and other details herein are only indicative and the developer's reserve their rights to change any of all of these in the interest of the development. This printed material does not constitute an offer and or contract any type between the developer and the recipient. Any purchase of this development shall be governed by the terms and conditions of the agreement for sale/ lease entered into between parties and no detail mentioned in this printed material shall in any way govern such transaction.